

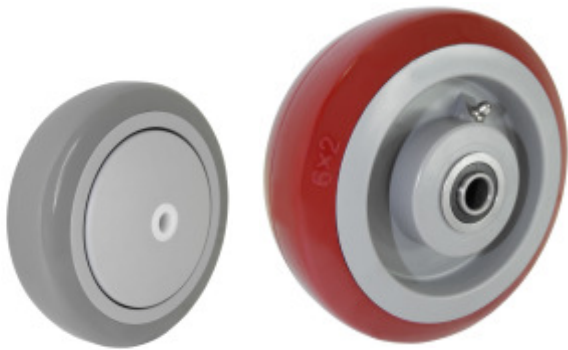


## Wheel Specifications

314 Axminister Dr.  
Fenton, MO 63026

(866) 206-8792

### Polyurethane on Polyolefin Wheels



Non-Marking treads  
Durometer 60 Shore D (+/- 5)  
Temperature Range: -40° F to 180° F

Wheel Diameter	Tread Width	Tread Type	Hub Length *	Capacity	Part Number <i>Replace ** with Bearing Code</i>	Bearing Code Options Available
2"	7/8"	Flat	15/16"	75	APP20BT80	80
2-1/2"	1-1/4"	Flat	1-9/16"	250	APP25GB42	42
3"	1"	Flat	1-1/8"	125	APP30DT80	80
	1-1/4"	Flat	1-9/16"	250	APP30GI44	44
3-1/2"	1-1/4"	Flat	1-9/16"	250	APP35GI44	44
4"	1"	Flat	1-1/8"	140	APP40DT81	81
	1-1/4"	Flat	1-9/16"	300	APP40GT**	47, 83
		Round	1-9/16"	300	APP40GY**	47, 83
2"	Flat	2-3/8"	500	APP40JM**	04, 05, 51, 6S, 84	
5"	1"	Flat	1-1/8"	145	APP50DT81	81
	1-1/4"	Flat	1-9/16"	300	APP50GT**	47, 83
		Round	1-9/16"	300	APP50GY**	47, 83
2"	Flat	2-3/8"	600	APP50JM**	04, 05, 51, 6S, 84	
6"	1-1/4"	Flat	1-9/16"	300	APP60GI44	44
	2"	Flat	2-3/8"	700	APP60JM**	04, 05, 51, 6S, 84
8"	2"	Flat	2-3/8"	800	APP80JM**	04, 05, 51, 6S, 84

Bearing Options		
Bearing Code	Bearing Type	Bearing I.D.
04	Roller	3/4"
05	S.S. Roller	3/4"
42	Ball	3/8"
44	Prec. Ball	3/8"
47	Prec. Ball	3/8"
51	Ball	1/2"
6S	S.S. Prec. Ball	1/2"
80	Plain	1/4"
81	Plain	5/16"
83	Plain	1/2"
84	Plain	1-3/16"

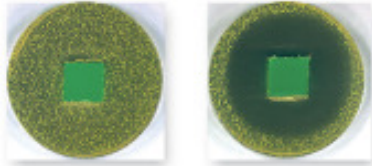
\* With bearing code #84, hub length is 2-3/16".

# Anti-Microbial Polyurethane Wheels



Suppresses the growth of a variety of destructive and odor causing microbes including bacteria, molds, mildew, and fungi.

Bacterial growth over a seven day incubation...



...without

...with



Non-Marking treads  
Durometer 60 Shore D (+/- 5)  
Temperature Range: -40° F to 180° F

Bearing Options		
Bearing Code	Bearing Type	Bearing I.D.
02	Roller	5/8"
04	Roller	3/4"
05	S.S. Roller	3/4"
11	Delrin	3/4"
51	Ball	1/2"
6S	S.S. Prec. Ball	1/2"
83	Plain	1/2"
84	Plain	1-3/16"

## Poly on Poly Anti-Microbial

Wheel Diameter	Tread Width	Hub Length *	Capacity	Part Number <i>Replace ** with Bearing Code</i>	Bearing Code Options Available
3"	1-3/8"	1-1/4"	300	APM30GT83	83
3-1/2"	1-3/8"	1-1/4"	360	APM35GT83	83
4"	1-3/8"	1-1/4"	400	APM40GT83	83
	2"	2-3/8"	600	APM40JT**	02, 04, 05, 11, 51, 6S, 84
5"	1-3/8"	1-3/8"	440	APM40GT83	83
	2"	2-3/8"	750	APM50JT**	02, 04, 05, 11, 51, 6S, 84
6"	2"	2-3/8"	900	APM60JT**	02, 04, 05, 11, 51, 6S, 84
8"	2"	2-3/8"	1000	APM80JT**	02, 04, 05, 11, 51, 6S, 84

## Solid Poly Anti-Microbial

Wheel Diameter	Tread Width	Hub Length *	Capacity	Part Number <i>Replace ** with Bearing Code</i>	Bearing Code Options Available
4"	2"	2-3/8"	800	ASM40JT**	02, 04, 05, 11, 51, 6S, 84
5"	2"	2-3/8"	1000	ASM50JT**	02, 04, 05, 11, 51, 6S, 84
6"	2"	2-3/8"	1100	ASM60JT**	02, 04, 05, 11, 51, 6S, 84
8"	2"	2-3/8"	1200	ASM80JT**	02, 04, 05, 11, 51, 6S, 84

\* With bearing code #84, hub length is 2-3/16".

## Solid Polyurethane Wheels



Non-Marking treads  
 Durometer 68 Shore D (+/- 5)  
 Temperature Range: -50° F to 180° F



Wheel Diameter	Tread Width	Hub Length *	Capacity	Part Number <i>Replace ** with Bearing Code</i>	Bearing Code Options Available
3"	1-1/4"	1-9/16"	300	ASU30GL**	83, 51
4"	1-1/4"	1-9/16"	400	ASU40GL**	83, 51
	2"	2-3/8"	750	ASU40JL**	04, 05, 51, 6S, 84
5"	1-1/4"	1-9/16"	700	ASU50GL**	83, 51
	2"	2-3/8"	900	ASU50JL**	04, 05, 51, 6S, 84
6"	2"	2-3/8"	1000	ASU60JL**	04, 05, 51, 6S, 84
8"	2"	2-3/8"	1000	ASU80JL**	04, 05, 51, 6S, 84

\* With bearing code #84, hub length is 2-3/16".

Bearing Options		
Bearing Code	Bearing Type	Bearing I.D.
04	Roller	3/4"
05	S.S. Roller	3/4"
11	Delrin	3/4"
15	Prec. BB w/Top Hats	3/4"
51	Ball	1/2"
6S	S.S. Prec. Ball	1/2"
63	Sealed Prec. BB w/Top Hats	1/2"
83	Plain	1/2"
84	Plain	1-3/16"

## Solid Elastomer Wheels



Non-Marking treads  
 Durometer 60 Shore D (+/- 5)  
 Temperature Range: -50° F to 180° F

Wheel Diameter	Tread Width	Hub Length *	Capacity	Part Number <i>Replace ** with Bearing Code</i>	Bearing Code Options Available
4"	2"	2-3/8"	1000	AHU40JI**	04, 05, 11, 6S, 63, 84
5"	1-1/4"	1-3/8"	700	AHU50GI83	83
	2"	2-3/8"	1400	AHU50JI**	04, 05, 11, 6S, 63, 84
6"	2"	2-3/8"	1700	AHU60JI**	04, 05, 11, 6S, 63, 84
8"	2"	2-3/8"	2000	AHU80JI**	04, 05, 11, 6S, 63, 84
	3"	3-1/4"	3000	AHU80LI15	15
10"	3"	3-1/4"	3200	AHU10LI15	15

\* With bearing code #84, hub length is 2-3/16".

# Mold-On Polyurethane Wheels

Non-Marking treads  
 Durometer 95 Shore D (+/- 5)  
 Temperature Range: -50° F to 180° F



## Cast Iron Hubs

Wheel Diameter	Tread Width	Hub Length *	Capacity	Part Number <i>Replace ** with Bearing Code</i>	Bearing Code Options Available
4"	2"	2-3/8"	800	APU40JG**	02, 04, 11, 84
5"	2"	2-3/8"	1100	APU50JG**	02, 04, 11, 84
6"	2"	2-3/8"	1200	APU60JG**	02, 04, 11, 84
	3"	3-3/8"	2000	APU60JG**	24, 26, 85
8"	2"	2-3/8"	1400	APU80JG**	02, 04, 11, 84
	3"	3-3/8"	2500	APU80JG**	24, 26, 85
10"	3"	3-1/4"	3000	APU10LG**	24, 26, 85

## Aluminum Hubs

Wheel Diameter	Tread Width	Hub Length *	Capacity	Part Number <i>Replace ** with Bearing Code</i>	Bearing Code Options Available
3-1/2"	1-1/4"	1-9/16"	400	APA30GL43	43
4"	1-1/4"	1-9/16"	420	APA40GL43	43
	2"	2-3/8"	800	APA40JN**	02, 04, 11, 84
5"	1-1/4"	1-9/16"	440	APA50GL43	43
	2"	2-3/8"	900	APA50JN**	02, 04, 11, 84
6"	2"	2-3/8"	1200	APA60JN**	02, 04, 11, 84
8"	2"	2-3/8"	1500	APA80PN**	02, 04, 11, 84

Bearing Options		
Bearing Code	Bearing Type	Bearing I.D.
02	Roller	5/8"
04	Roller	3/4"
11	Delrin	3/4"
24	Roller	1"
26	Roller	1-1/4"
43	Annular Ball	3/8"
84	Plain	1-3/16"
85	Plain	1-15/16"

\* With bearing code #84, hub length is 2-3/16".

## Thermoplastic Rubber (TPR) Wheels



Non-Marking treads  
 Durometer 75 Shore A (+/- 5)  
 Temperature Range: -40° F to 180° F

Wheel Diameter	Tread Width	Tread Type	Hub Length *	Capacity	Part Number <i>Replace ** with Bearing Code</i>	Bearing Code Options Available
2"	7/8"	Flat	1"	75	ATP20BT80	80
2-1/2"	1-1/4"	Flat	1-9/16"	250	ATP25GB42	42
3"	7/8"	Flat	1"	125	ATP30BT80	80
	1-1/4"	Flat	1-9/16"	210	ATP30GI44	44
3-1/2"	1-1/4"	Round	1-9/16"	230	ATP35GY44	44
4"	1-1/4"	Flat	1-1/4"	135	ATP40DH81	81
		Flat	1-9/16"	250	ATP40GT**	47, 83
		Round	1-9/16"	250	ATP40GY**	47, 83
	2"	Flat	2-3/8"	300	ATP40JT**	04, 05, 51, 6S, 84
5"	1-1/4"	Flat	1-1/4"	135	ATP50DH81	81
		Flat	1-9/16"	300	ATP50GT**	47, 83
		Round	1-9/16"	300	ATP50GY**	47, 83
	2"	Flat	2-3/8"	350	ATP50JT**	04, 05, 51, 6S, 84
6"	1-1/4"	Flat	1-9/16"	300	ATP60GI44	44
		Flat	2-3/8"	500	ATP60JT**	04, 05, 51, 6S, 84
	2"	Round	2-3/8"	500	ATP60JI**	04, 05, 51, 6S, 84
8"	2"	Flat	2-3/8"	600	ATP80JT**	04, 05, 51, 6S, 84
		Round	2-3/8"	600	ATP80JI**	04, 05, 51, 6S, 84

Bearing Options		
Bearing Code	Bearing Type	Bearing I.D.
04	Roller	3/4"
05	S.S. Roller	3/4"
42	Ball	3/8"
44	Prec. Ball	3/8"
47	Prec. Ball	3/8"
51	Ball	1/2"
6S	S.S. Prec. Ball	1/2"
80	Plain	1/4"
81	Plain	5/16"
83	Plain	1/2"
84	Plain	1-3/16"

\* With bearing code #84, hub length is 2-3/16".



## Solid Soft Rubber Wheels

Durometer 80 Shore D (+/- 5)  
Temperature Range: -50° F to 180° F



Wheel Diameter	Tread Width	Hub Length	Capacity	Part Number	Bearing Code Option
2"	7/8"	1"	90	ASR20BB80	80
2-1/2"	7/8"	1"	125	ASR25BB81	81
	1-1/4"	1-9/16"	175	ASR25GB82	82
3"	7/8"	1-1/4"	100	ASR30DB81	81
	1-1/4"	1-9/16"	175	ASR30GB82	82
3-1/2"	1-1/4"	1-9/16"	200	ASR35GB82	82
4"	1"	1-1/4"	125	ASR40DB81	81
	1-1/4"	1-9/16"	220	ASR40GB82	82
5"	1"	1-1/4"	125	ASR50DB81	81
	1-1/4"	1-9/16"	250	ASR50GB82	82

Bearing Options		
Bearing Code	Bearing Type	Bearing I.D.
80	Plain	1/4"
81	Plain	5/16"
82	Plain	3/8"



## Solid Hard Rubber Wheels

Durometer 60 Shore D (+/- 5)  
Temperature Range: -50° F to 160° F

Wheel Diameter	Tread Width	Hub Length	Capacity	Part Number	Bearing Code Option
2"	7/8"	1"	125	AHR20BB80	80
2-1/2"	7/8"	1"	150	AHR25BB81	81
	1-1/4"	1-9/16"	275	AHR25GB82	82
3"	1"	1-1/4"	125	AHR30DB81	81
	1-1/4"	1-9/16"	275	AHR30GB82	82
3-1/2"	1-1/4"	1-9/16"	210	AHR35GB82	82
4"	1"	1-1/4"	140	AHR40DB81	81
	1-1/4"	1-9/16"	300	AHR40GB82	82
5"	1"	1-1/4"	145	AHR50DB81	81
	1-1/4"	1-9/16"	300	AHR50GB82	82



## Mold-On Rubber Wheels



Durometer 75 Shore A (+/- 5)  
Temperature Range: -40° F to 180° F

### Cast Iron Hubs

Wheel Diameter	Tread Width	Hub Length *	Capacity	Part Number <i>Replace ** with Bearing Code</i>	Bearing Code Options Available
4"	2"	2-3/8"	400	ARS40JB**	02, 04, 11, 84
5"	2"	2-3/8"	400	ARS50JB**	02, 04, 11, 84
6"	2"	2-3/8"	550	ARS60JB**	02, 04, 11, 84
8"	2"	2-3/8"	600	ARS80JB**	02, 04, 11, 84
10"	2-1/2"	2-3/4"	1000	ARS10KB**	04, 84
		3-1/4"	1000	ARS10QB**	04, 85
	3"	3-1/4"	1100	ARS10LB**	24, 26, 85
12"	2-1/2"	2-3/4"	1200	ARS12KB**	04, 84
	3"	3-1/4"	1300	ARS12LB**	24, 26, 85
14"	3"	3-1/4"	1300	ARS14LB**	24, 26, 85

### Nylon Hubs

Wheel Diameter	Tread Width	Hub Length *	Capacity	Part Number <i>Replace ** with Bearing Code</i>	Bearing Code Options Available
4"	2"	2-3/8"	400	ARN40JB**	02, 04, 11, 84
5"	2"	2-3/8"	450	ARN50JB**	02, 04, 11, 84
6"	2"	2-3/8"	500	ARN60JB**	02, 04, 11, 84
8"	2"	3-3/8"	600	ARN80JB**	02, 04, 11, 84

### Aluminum Hubs

Wheel Diameter	Tread Width	Hub Length *	Capacity	Part Number <i>Replace ** with Bearing Code</i>	Bearing Code Options Available
3-1/2"	1-1/4"	1-9/16"	250	ARA30GI43	43
4"	1-1/4"	1-9/16"	250	ARA40GI43	43
	2"	2-3/8"	400	ARA40JB**	02, 04, 11, 84
5"	1-1/4"	1-9/16"	275	ARA50GI43	43
	2"	2-3/8"	500	ARA50JB**	02, 04, 11, 84
6"	2"	2-3/8"	550	ARA60JB**	02, 04, 11, 84
8"	1-5/8"	2"	500	ARA80PB**	51, 52, 53, 95

### Bearing Options

Bearing Code	Bearing Type	Bearing I.D.
02	Roller	5/8"
04	Roller	3/4"
11	Delrin	3/4"
24	Roller	1"
26	Roller	1-1/4"
43	Annular Ball	3/8"
51	Ball	1/2"
52	Ball	5/8"
53	Ball	3/4"
84	Plain	1-3/16"
85	Plain	1-15/16"
95	Plain	1-3/8"

## Polyolefin (Plastic) Wheels



Non-Marking treads  
 Durometer 70 Shore D (+/- 5)  
 Temperature Range: -40° F to 180° F



Wheel Diameter	Tread Width	Color/Tread Type	Hub Length *	Capacity	Part Number Replace ** with Bearing Code	Bearing Code Options Available
3"	1-1/4"	Black/Flat	1-9/16"	250	APO30GB82	82
		White/Round	1-9/16"	250	APO30GJ83	83
3-1/2"	1-1/4"	Black/Flat	1-9/16"	300	APO35GB82	82
		White/Round	1-9/16"	300	APO35GJ83	83
4"	1-1/4"	Black/Flat	1-9/16"	300	APO40GB82	82
		White/Round	1-9/16"	300	APO40GJ83	83
	2"	Black/Flat	2-3/8"	500	APO40JB**	04, 05, 11, 51, 6S, 84
		White/Flat	2-3/8"	500	APO40JJ**	04, 05, 11, 51, 6S, 84
5"	1-1/4"	Black/Flat	1-9/16"	375	APO50GB82	82
		White/Round	1-9/16"	375	APO50GJ83	83
	2"	Black/Flat	2-3/8"	650	APO50JB**	04, 05, 11, 51, 6S, 84
		White/Flat	2-3/8"	650	APO50JJ**	04, 05, 11, 51, 6S, 84
6"	2"	Black/Flat	2-3/8"	700	APO60GB**	04, 05, 11, 51, 6S, 84
		White/Flat	2-3/8"	700	APO60JJ**	04, 05, 11, 51, 6S, 84
8"	2"	Black/Flat	2-3/8"	900	APO80GB**	04, 05, 11, 51, 6S, 84
		White/Flat	2-3/8"	900	APO80JJ**	04, 05, 11, 51, 6S, 84

Bearing Options		
Bearing Code	Bearing Type	Bearing I.D.
04	Roller	3/4"
05	S.S. Roller	3/4"
11	Delrin	3/4"
51	Ball	1/2"
6S	S.S. Prec. Ball	1/2"
82	Plain	3/8"
83	Plain	1/2"
84	Plain	1-3/16"

\* With bearing code #84, hub length is 2-3/16".





## Nylon Wheels

Non-Marking treads  
 Durometer 75 Shore D (+/- 5)  
 Temperature Range: -40° F to 210° F



Wheel Diameter	Tread Width	Hub Length *	Capacity	Part Number <i>Replace ** with Bearing Code</i>	Bearing Code Options Available
3"	1-1/4"	1-9-16"	300	ANY30GE**	42, 83
3-1/2"	1-1/4"	1-9-16"	325	ANY35GE**	42, 83
4"	1-1/4"	1-9-16"	350	ANY40GE**	42, 83
	2"	2-3/8"	800	ANY40JE**	02, 04, 05, 11, 51, 6S, 84
5"	1-1/4"	1-9-16"	500	ANY50GE**	42, 83
	2"	2-3/8"	900	ANY50JE**	02, 04, 05, 11, 51, 6S, 84
6"	2"	2-3/8"	1000	ANY60JE**	02, 04, 05, 11, 51, 6S, 84
8"	2"	2-3/8"	1100	ANY80JE**	02, 04, 05, 11, 51, 6S, 84

\* With bearing code #84, hub length is 2-3/16".

Bearing Options		
Bearing Code	Bearing Type	Bearing I.D.
02	Roller	5/8"
04	Roller	3/4"
05	S.S. Roller	3/4"
11	Delrin	3/4"
42	Ball	3/8"
51	Ball	1/2"
6S	S.S. Prec. Ball	1/2"
83	Plain	1/2"
84	Plain	1-3/16"



## Glass Filled Nylon Wheels

Non-Marking treads  
 Durometer 85 Shore D (+/- 5)  
 Temperature Range: -45° F to 250° F

Wheel Diameter	Tread Width	Hub Length *	Capacity	Part Number <i>Replace ** with Bearing Code</i>	Bearing Code Options Available
4"	2"	2-3/8"	800	AMA40JB**	02, 04, 05, 11, 51, 6S, 84
5"	2"	2-3/8"	1000	AMA50JB**	02, 04, 05, 11, 51, 6S, 84
6"	2"	2-3/8"	1200	AMA60JB**	02, 04, 05, 11, 51, 6S, 84
8"	2"	2-3/8"	1400	AMA80JB**	02, 04, 05, 11, 51, 6S, 84

\* With bearing code #84, hub length is 2-3/16".

## Phenolic Wheels



Durometer 90 Shore D (+/- 5)  
Temperature Range: -50° F to 250° F

Wheel Diameter	Tread Width	Hub Length *	Capacity	Part Number <i>Replace ** with Bearing Code</i>	Bearing Code Options Available
3"	1-1/4"	1-3/8"	300	APH30GB83	83
3-1/2"	1-1/4"	1-3/8"	350	APH35GB83	83
4"	1-1/4"	1-3/8"	400	APH40GB83	83
	1-1/2"	1-7/8"	600	APH40HB**	02, 04, 83, 84
	2"	2-3/8"	800	APH40JB**	04, 05, 11, 51, 6S, 84
5"	1-1/4"	1-3/8"	450	APH50GB83	83
	1-1/2"	1-7/8"	600	APH50HB**	02, 04, 83, 84
	2"	2-3/8"	1000	APH50JB**	04, 05, 11, 51, 6S, 84
6"	2"	2-3/8"	1200	APH60JB**	04, 05, 11, 51, 6S, 84
	3"	3-3/8"	2000	APH60JB**	24, 26, 85
8"	2"	2-3/8"	1400	APH80JB**	04, 05, 11, 51, 6S, 84
	3"	3-3/8"	2500	APH80LB**	24, 26, 85
10"	3"	3-3/8"	2900	APH10LB**	24, 26, 85
12"	3"	3-3/8"	3500	APH12LB**	24, 26, 85

Bearing Options		
Bearing Code	Bearing Type	Bearing I.D.
02	Roller	5/8"
04	Roller	3/4"
05	S.S. Roller	3/4"
11	Delrin	3/4"
24	Roller	1"
26	Roller	1-1/4"
51	Ball	1/2"
6S	S.S. Prec. Ball	1/2"
83	Plain	1/2"
84	Plain	1-3/16"
85	Plain	1-15/16"

\* With bearing code #84, hub length is 2-3/16".



## Hi-Temp Phenolic Wheels

Durometer 95 Shore D (+/- 5)  
Temperature Range: -40° F to 475° F



Wheel Diameter	Tread Width	Hub Length *	Capacity	Part Number <i>Replace ** with Bearing Code</i>	Bearing Code Options Available
3"	1-1/4"	1-3/8"	200	AHT30GQ**	83, 97
4"	1-1/4"	1-3/8"	200	AHT40GQ**	83, 97
	1-1/2"	1-7/8"	400	AHT40HQ**	02, 04, 05, 83, 84
	2"	2-3/8"	600	AHT40JQ**	04, 05, 11, 51, 6S, 84
5"	1-1/4"	1-3/8"	300	AHT50GQ**	83, 97
	1-1/2"	1-7/8"	500	AHT50HQ**	02, 04, 05, 83, 84
	2"	2-3/8"	750	AHT50JQ**	04, 05, 11, 51, 6S, 84
6"	2"	2-3/8"	900	AHT60JQ**	04, 05, 11, 51, 6S, 84
8"	2"	2-3/8"	1100	AHT80JQ**	04, 05, 11, 51, 6S, 84

\* With bearing code #84, hub length is 2-3/16".

Bearing Options		
Bearing Code	Bearing Type	Bearing I.D.
02	Roller	5/8"
04	Roller	3/4"
05	S.S. Roller	3/4"
11	Delrin	3/4"
51	Ball	1/2"
6S	S.S. Prec. Ball	1/2"
83	Plain	1/2"
84	Plain	1-3/16"
97	S.S. Top Hats	3/8"



## Hi-Temp Glass Filled Nylon Wheels

Durometer 85 Shore D (+/- 5)  
Temperature Range: -70° F to 475° F

Wheel Diameter	Tread Width	Hub Length *	Capacity	Part Number <i>Replace ** with Bearing Code</i>	Bearing Code Options Available
3"	1-3/8"	1-1/2"	600	AHE30GQ83	83
4"	1-3/8"	1-1/2"	700	AHE40GQ**	02, 83
	2"	2-3/8"	800	AHE40JQ**	04, 05, 6S, 84
5"	1-3/8"	1-1/2"	800	AHE50GQ83	83
	2"	2-3/8"	1000	AHE50JQ**	04, 05, 6S, 84
6"	2"	2-3/8"	1200	AHE60JQ**	04, 05, 6S, 84
8"	2"	2-3/8"	1400	AHE80JQ**	04, 05, 6S, 84

\* With bearing code #84, hub length is 2-3/16".

## Hi-Temp Brimstone Wheels



Durometer 75 Shore A (+/- 5)  
Temperature Range: -40° F to 400° F

Wheel Diameter	Tread Width	Hub Length *	Capacity	Part Number <i>Replace ** with Bearing Code</i>	Bearing Code Options Available
3"	1-1/4"	1-3/8"	300	AGN30GQ**	83, 97
4"	1-1/4"	1-3/8"	300	AGN40GQ**	83, 97
	2"	2-3/8"	800	AGN40JQ**	04, 05, 6S, 84
5"	1-1/4"	1-3/8"	700	AGN50GQ**	83, 97
	2"	2-3/8"	1000	AGN50JQ**	04, 05, 6S, 84
6"	2"	2-3/8"	1100	AGN60JQ**	04, 05, 6S, 84
8"	2"	2-3/8"	1200	AGN80JQ**	04, 05, 6S, 84

\* With bearing code #84, hub length is 2-3/16".

Bearing Options		
Bearing Code	Bearing Type	Bearing I.D.
04	Roller	3/4"
05	S.S. Roller	3/4"
6S	S.S. Prec. Ball	1/2"
83	Plain	1/2"
84	Plain	1-3/16"
97	S.S. Top Hats	3/8"



## Hi-Temp Rubber on Aluminum Wheels

Durometer 75 Shore A (+/- 5)  
Temperature Range: -40° F to 400° F

Wheel Diameter	Tread Width	Hub Length *	Capacity	Part Number <i>Replace ** with Bearing Code</i>	Bearing Code Options Available
4"	1-1/4"	1-9/16"	200	AC-BF40GC83	83

## Pneumatic Wheels



Tire Diameter* and Spec.	Ply Rating	PSI	Hub Type and Design	Hub Length	Capacity	Part Number <i>Replace ** with Bearing Code</i>	Bearing Code Options Available
6" x 1-1/4"		90	1-PC Centered	1-9/16"	150	AFP60GB42	42
6" x 2"	4	30	2-PC Centered	2-1/2"	200	AFP60JB60	60
8" 280-4	4	50	3-PC Centered	3-3/16"	250	AFP80LB**	51, 52, 53, 95
			3-PC Offset	2-1/4"	250	AFP80LB**	51, 52, 53, 95
10" 350-4	4	50	3-PC Centered	4"	350	AFP10LB**	51, 52, 53, 95
			3-PC Offset	2-1/4"	350	AFP10LB**	51, 52, 53, 95
12" 350-6	4	50	1-PC Centered	4"	460	AFP12LB**	51, 52, 53, 95
16" 480-8	4	45	1-PC Centered	3"	500	AFP16LB**	51, 52, 53, 95

Bearing Options		
Bearing Code	Bearing Type	Bearing I.D.
42	Ball	3/8"
51	Ball	1/2"
52	Ball	5/8"
53	Ball	3/4"
60	Prec. Ball	1/2"
95	Plain	1-3/8"

## Flat-Free Solid Micro-Cellular Foam Polyurethane Wheels



Tire Diameter* and Spec.	Tread Width	Hub Type and Design	Hub Length	Capacity	Part Number <i>Replace ** with Bearing Code</i>	Bearing Code Options Available
6"	1-1/4"	1-PC Centered	1-5/8"	200	AER60GB42	42
8" (280-4)	2-3/4"	3-PC Centered	3-3/16"	250	AER80LB**	51, 52, 53, 95
		3-PC Offset	2-1/4"	250	AER80LB**	51, 52, 53, 95
10" (350-4)	3"	3-PC Centered	4"	280	AER10LB**	51, 52, 53, 95
		3-PC Offset	2-1/4"	280	AER10LB**	51, 52, 53, 95



## Semi-Pneumatic & Solid Wheels



Wheel Diameter	Tread Width	Tire Type	Hub Type	Hub Length	Capacity	Part Number <i>Replace ** with Bearing Code</i>	Bearing Code Options Available
8"	2-1/2"	Solid	Poly/Offset	2-1/4"	450	ASN80SO**	51, 52, 53, 95
8"	2-1/2"	Solid	Poly/Centered	2-1/2"	450	ASN80SC**	51, 52, 53, 95
10"	2-3/4"	Hollow	Poly/Offset	2-1/4"	500	ASN10HO**	51, 52, 53, 95
10"	2-3/4"	Hollow	Poly/Centered	3-1/4"	500	ASN10HC**	51, 52, 53, 95
10"	2-3/4"	Solid	Poly/Offset	2-1/4"	650	ASN10SO**	51, 52, 53, 95
10"	2-3/4"	Solid	Poly/Centered	3-1/4"	650	ASN10SC**	51, 52, 53, 95
10"	2-3/4"	Solid	Steel/Offset	2-1/4"	550	ASN10ST**	51, 52, 53, 95
12"	3"	Solid	Poly/Centered	3-1/4"	850	ASN12SC**	51, 52, 53, 95

## Semi-Pneumatic Wheels



Bearing Options		
Bearing Code	Bearing Type	Bearing I.D.
51	Ball	1/2"
52	Ball	5/8"
53	Ball	3/4"
95	Plain	1-3/8"

Wheel Diameter	Tread Width	Ball Bearing I.D.	Tread Pattern	Hub Length	Hub Type	Capacity	Part Number
6"	1-1/2"	1/2"	Diamond	1-3/4"	Centered	50	ASN60DC51
8"	1-3/4"	1/2"	Diamond	2"	Centered	60	ASN80DC51
				1-3/8"	Offset	60	ASN80DO51
			Ribbed	2"	Centered	60	ASN80RC51
				1-3/8"	Offset	60	ASN80RO51
		5/8"	Ribbed	2"	Centered	110	ASN80HC52
				1-3/8"	Offset	110	ASN80HO52
10"	1-3/4"	1/2"	Ribbed	2-1/16"	Centered	80	ASN10RC51
				1-1/2"	Offset	80	ASN10RO51
		5/8"	Ribbed	2-1/16"	Centered	150	ASN10HC52
				1-1/2"	Offset	150	ASN10HO52
12"	1-3/4"	5/8"	Ribbed	2-1/4"	Centered	150	ASN12HC52
14"	1-3/4"	3/4"	Ribbed	2-1/4"	Centered	150	ASN14HC53





## Semi-Steel Wheels

Hardness: Brinell 145  
 Tensile Strength: 30,000 PSI  
 Temperature Range: -45° F to 600° F



Wheel Diameter	Tread Width	Hub Length *	Capacity	Part Number Replace ** with Bearing Code	Bearing Code Options Available
2"	7/8"	1"	200	ASS20CS80	80
3"	1-1/4"	1-9/16"	300	ASS30GS82	82
4"	1-1/4"	1-9/16"	300	ASS40GS83	83
	2"	2-3/8"	700	ASS40JS**	04, 84
5"	2"	2-3/8"	1000	ASS50JS**	04, 84
6"	2"	2-3/8"	1200	ASS60JS**	04, 84
	3"	3-3/8"	2500	ASS60LS**	24, 26, 85
8"	2"	2-3/8"	1400	ASS80JS**	04, 84
	3"	3-3/8"	2500	ASS80LS**	24, 26, 85

\* With bearing code #84, hub length is 2-3/16".

Bearing Options		
Bearing Code	Bearing Type	Bearing I.D.
04	Roller	3/4"
24	Roller	1"
26	Roller	1-1/4"
70	Tapered w/Top Hats	3/4"
71	Tapered w/Top Hats	1"
73	Tapered w/Top Hats	1/2"
80	Plain	1/4"
82	Plain	3/8"
83	Plain	1/2"
84	Plain	1-3/16"
85	Plain	1-15/16"
86	Plain	2-7/16"



## Ductile Steel Wheels

Tensile Strength: 45,000 PSI  
 Temperature Range: -45° F to 800° F

Wheel Diameter	Tread Width	Hub Length *	Capacity	Part Number Replace ** with Bearing Code	Bearing Code Options Available
4"	2"	2-3/8"	1500	ADS40JS**	04, 73, 84
5"	2"	2-3/8"	1500	ADS50JS**	04, 73, 84
6"	2"	2-3/8"	2000	ADS60JS**	04, 73, 84
		3-1/4"	6000	ADS60LS**	24, 26, 86
	3"	3-1/2"	10000	ADS60LS**	70, 71
8"	2"	2-3/8"	2000	ADS80JS**	04, 84
		3-1/4"	6000	ADS80LS**	24, 26, 86
	3"	3-1/2"	10000	ADS80LS**	70, 71
10"	3"	3-1/4"	6000	ADS10LS**	24, 26, 86
		3-1/2"	10000	ADS10LS**	70, 71

\* With bearing code #84, hub length is 2-3/16".



## Forged Steel Wheels

Hardness: Rockwell 80B  
 Tensile Strength: 60,000 PSI  
 Temperature Range: Up to 1,300° F



Wheel Diameter	Tread Width	Hub Length *	Capacity	Part Number <i>Replace ** with Bearing Code</i>	Bearing Code Options Available
6"	2"	2-3/8"	2500	AFS60JS**	04, 73, 84
	3"	3-1/4"	8000	AFS60LS**	24, 26, 86
		3-1/2"	11000	AFS60LS**	70, 71
8"	2"	2-3/8"	3000	AFS80JS**	04, 84
	3"	3-1/4"	8000	AFS80LS**	24, 26, 86
		3-1/2"	11000	AFS80LS**	70, 71
10"	3"	3-1/4"	8000	AFS10LS**	24, 26, 86
		3-1/2"	11000	AFS10LS**	70, 71

Bearing Options		
Bearing Code	Bearing Type	Bearing I.D.
04	Roller	3/4"
24	Roller	1"
26	Roller	1-1/4"
70	Tapered w/Top Hats	3/4"
71	Tapered w/Top Hats	1"
73	Tapered w/Top Hats	1/2"
84	Plain	1-3/16"
86	Plain	2-7/16"

\* With bearing code #84, hub length is 2-3/16".

## V-Grooved Wheels



Cast Iron



Ductile Steel



Solid Polyurethane



Solid Steel



Glass Filled Nylon

# V-Grooved Wheels



## Cast Iron V-Groove

Wheel Diameter	Tread Width	Hub Length *	Groove Width	Capacity	Part Number <i>Replace ** with Bearing Code</i>	Bearing Code Options Available
3"	1-1/4"	1-5/8"	7/8"	300	AVG30GT83	83
4"	1-1/2"	1-7/8"	7/8"	350	AVG40HT**	04, 84
	2"	2-3/8"	7/8"	600	AVG40JT**	02, 04, 84
5"	2"	2-3/8"	7/8"	900	AVG50JT**	02, 04, 84
6"	2"	2-3/8"	7/8"	1000	AVG60JT**	02, 04, 84
	3"	3-3/8"	1-3/8"	3500	AVG60LW**	24, 26, 85
8"	2"	2-3/8"	7/8"	1200	AVG80JT**	02, 04, 84
	3"	3-3/8"	1-3/8"	3500	AVG80LW**	24, 26, 85

## Ductile Steel V-Groove

Wheel Diameter	Tread Width	Hub Length *	Groove Width	Capacity	Part Number <i>Replace ** with Bearing Code</i>	Bearing Code Options Available
4"	2"	2-3/8"	7/8"	1500	ADV40JT**	02, 04, 84
6"	2"	2-3/8"	7/8"	1500	ADV60JT**	02, 04, 84
	3"	3-3/8"	1-3/8"	5000	ADV60LW**	24, 26, 85
8"	3"	3-3/8"	1-3/8"	5000	ADV60JW**	24, 26, 85

## Solid Steel V-Groove

Wheel Diameter	Tread Width	Hub Length *	Groove Width	Capacity	Part Number <i>Replace ** with Bearing Code</i>	Bearing Code Options Available
4"	1-13/16"	2"	7/8"	3000	ASV40IT63	63
6"	1-13/16"	2"	7/8"	5000	ASV60IT63	63

## Glass Filled Nylon V-Groove

Wheel Diameter	Tread Width	Hub Length *	Groove Width	Capacity	Part Number <i>Replace ** with Bearing Code</i>	Bearing Code Options Available
4"	1-1/2"	1-7/8"	7/8"	600	AMV40HT**	02, 04, 11, 84
	2"	2-3/8"	7/8"	800	AMV40JT**	02, 04, 05, 11, 51, 6S, 84

## Solid Polyurethane V-Groove

Wheel Diameter	Tread Width	Hub Length *	Groove Width	Capacity	Part Number <i>Replace ** with Bearing Code</i>	Bearing Code Options Available
4"	2"	2-3/8"	7/8"	300	APV40JT**	02, 04, 05, 11, 51, 6S, 84
5"	2"	2-3/8"	7/8"	300	APV50JT**	02, 04, 05, 11, 51, 6S, 84
6"	2"	2-3/8"	7/8"	300	APV60JT**	02, 04, 05, 11, 51, 6S, 84
8"	2"	2-3/8"	7/8"	300	APV80JT**	02, 04, 05, 11, 51, 6S, 84

Bearing Options		
Bearing Code	Bearing Type	Bearing I.D.
02	Roller	5/8"
04	Roller	3/4"
05	S.S. Roller	3/4"
11	Delrin	3/4"
24	Roller	1"
26	Roller	1-1/4"
51	Ball	1/2"
6S	S.S. Prec. Ball	1/2"
63	Sealed Prec. BB w/Top Hats	1/2"
83	Plain	1/2"
84	Plain	1-3/16"
85	Plain	1-15/16"

\* With bearing code #84, hub length is 2-3/16".